



NCDOT GEOTECHNICAL ENGINEERING UNIT

BORELOG REPORT

PROJECT NO. 34379.1.17	ID. R-2123CE	COUNTY Mecklenburg	GEOLOGIST Smith, B.
SITE DESCRIPTION I-485 (Charlotte Eastern Outer Loop) at I-85			GROUND WTR (ft)
BORING NO. DB-15	STATION 50+60	OFFSET CL	ALIGNMENT -RAMP F-
COLLAR ELEV. 678.5 ft	TOTAL DEPTH 76.3 ft	NORTHING 586,772	EASTING 1,482,932
DRILL MACHINE CME-45C	DRILL METHOD SPT Core Boring	HAMMER TYPE Automatic	
DRILLER Gower, S.	START DATE 06/23/10	COMP. DATE 06/24/10	SURFACE WATER DEPTH N/A

ELEV (ft)	DRIVE ELEV (ft)	DEPTH (ft)	BLOW COUNT			BLOWS PER FOOT					SAMP. NO.	LOG MOI	SOIL AND ROCK DESCRIPTION				
			0.5ft	0.5ft	0.5ft	0	25	50	75	100				ELEV. (ft)	DEPTH (ft)		
680														678.5	0.0	GROUND SURFACE	
675	673.8	4.7	3	8	12								M			RESIDUAL Black, white, gray, brown & orange-brown, v. stiff to hard, saprolitic, f. sandy, silt (A-4).	
670	668.8	9.7	6	13	15								M				
665	663.8	14.7	7	13	10								M				
660	658.8	19.7	6	11	14								Sat.				
655	653.8	24.7	16	20	27								W				
650	648.8	29.7	14	19	18								M				
645	643.8	34.7	30	70/0.3									D	643.5	35.0	WEATHERED ROCK Black, white, gray, dk. gray & orange-brown, f. sand & silt, quartz diorite/diorite. Auger & SPT refusal @ 49.4'.	
640	638.8	39.7	90	10/0.1									D				
635	633.8	44.7	100/0.3										D				
630	629.1	49.4	60/0.0											629.1	49.4	CRYSTALLINE ROCK Light to dk. gray w/orange-brown staining, fresh weathering w/some v. sli. to sli. weathered zones, hard to v. hard, mod. close to close frac. spacing w/intervals v. close frac. spacing, f. crystalline quartz diorite, iron-oxide staining prevalent along frac. surfaces, numerous quartz veins & healed fracs.	
625																	
620																	
615																	
610																	
605														602.2	76.3	Boring Terminated at Elevation 602.2 ft in Crystalline Rock (Quartz Diorite).	
600																	

NCDOT BORE SINGLE R-2123CE.GPJ NC_DOT.GDT 6/30/10



NCDOT GEOTECHNICAL ENGINEERING UNIT

BORELOG REPORT

PROJECT NO. 34379.1.17	ID. R-2123CE	COUNTY Mecklenburg	GEOLOGIST Smith, B.
SITE DESCRIPTION I-485 (Charlotte Eastern Outer Loop) at I-85			GROUND WTR (ft)
BORING NO. DB-15	STATION 50+60	OFFSET CL	ALIGNMENT -RAMP F-
COLLAR ELEV. 678.5 ft	TOTAL DEPTH 76.3 ft	NORTHING 586,772	EASTING 1,482,932
DRILL MACHINE CME-45C	DRILL METHOD SPT Core Boring	HAMMER TYPE Automatic	
DRILLER Gower, S.	START DATE 06/23/10	COMP. DATE 06/24/10	SURFACE WATER DEPTH N/A

ELEV (ft)	DRIVE ELEV (ft)	DEPTH (ft)	BLOW COUNT			BLOWS PER FOOT					SAMP. NO.	LOG MOI	LOG	SOIL AND ROCK DESCRIPTION	DEPTH (ft)	
			0.5ft	0.5ft	0.5ft	0	25	50	75	100						ELEV. (ft)
600																
595																
590																
585																
580																
575																
570																
565																
560																
555																
550																
545																
540																
535																
530																
525																
520																

NCDOT BORE SINGLE R-2123CE.GPJ NC_DOT.GDT 6/30/10

Match Line

Boring caved in @ 20.0'.



NCDOT GEOTECHNICAL ENGINEERING UNIT

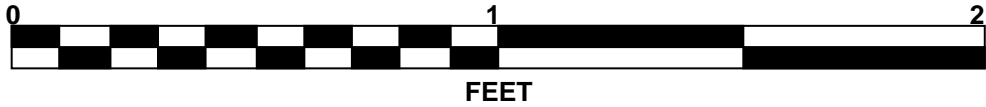
CORE BORING REPORT

PROJECT NO. 34379.1.17				ID. R-2123CE				COUNTY Mecklenburg				GEOLOGIST Smith, B.			
SITE DESCRIPTION I-485 (Charlotte Eastern Outer Loop) at I-85												GROUND WTR (ft)			
BORING NO. DB-15				STATION 50+60				OFFSET CL				ALIGNMENT -RAMP F-			
COLLAR ELEV. 678.5 ft				TOTAL DEPTH 76.3 ft				NORTHING 586,772				EASTING 1,482,932			
DRILL MACHINE CME-45C				DRILL METHOD SPT Core Boring								HAMMER TYPE Automatic			
DRILLER Gower, S.				START DATE 06/23/10				COMP. DATE 06/24/10				SURFACE WATER DEPTH N/A			
CORE SIZE NQ2				TOTAL RUN 26.9 ft											
ELEV (ft)	RUN ELEV (ft)	DEPTH (ft)	RUN (ft)	DRILL RATE (Min/ft)	RUN		SAMP. NO.	STRATA		LOG	DESCRIPTION AND REMARKS				
					REC. (%)	RQD (%)		REC. (%)	ROD (%)						
629.1											Begin Coring @ 49.4 ft				
	629.1	49.4	1.9	2:32/0.9	(1.7)	(0.3)		(25.0)	(14.9)		629.1	49.4			
	627.2	51.3	5.0	N=60/0.0 2:47	89%	16%		93%	55%		CRYSTALLINE ROCK				
625				2:04	(4.0)	(0.5)					Light to dk. gray w/orange-brown staining, fresh weathering w/some v. sli. to sli. weathered zones, hard to v. hard, mod. close to close frac. spacing w/intervals v. close frac. spacing, f. crystalline quartz diorite, iron-oxide staining prevalent along frac. surfaces, numerous quartz veins & healed fracs.				
				7:05	80%	10%									
	622.2	56.3		5:07											
620				2:31											
				4:00											
				3:01	(4.9)	(1.3)									
				2:35	98%	26%									
				2:42											
615	617.2	61.3	5.0	2:36	(4.6)	(4.3)									
				2:35	92%	86%									
				2:01											
				1:40											
	612.2	66.3	5.0	1:26	(4.9)	(3.6)									
				1:33	98%	72%									
				1:41											
				1:41											
610	607.2	71.3	5.0	1:59	(4.9)	(4.9)									
				2:07	98%	98%									
				1:59											
605				1:35											
				1:41											
				1:51											
	602.2	76.3		1:38											
				1:32											
600					Boring Terminated at Elevation 602.2 ft in Crystalline Rock (Quartz Diorite).						602.2	76.3			
					Boring caved in @ 20.0'.										
595															
590															
585															
580															
575															
570															
565															
560															
555															
550															

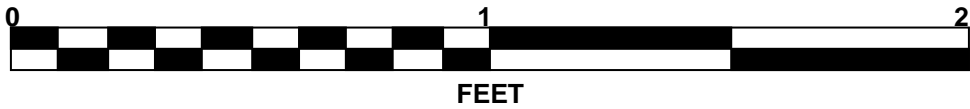
NCDOT CORE SINGLE R-2123CE.GPJ NC_DOT.GDT 6/30/10

CORE PHOTOGRAPHIC RECORD

I-485 (Charlotte Eastern Outer Loop) at I-85

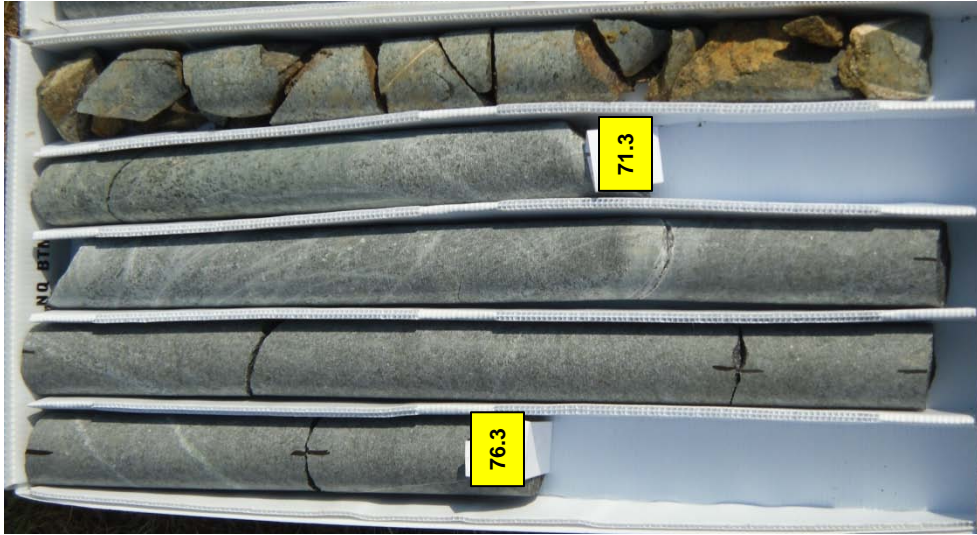
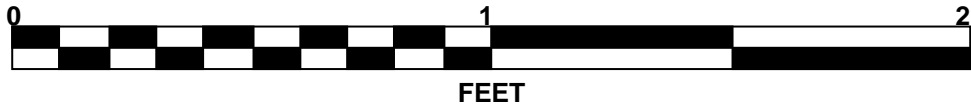


Boring DB-15 – Station 50+60 @ CL Box 1 of 3



Boring DB-15 – Station 50+60 @ CL Box 2 of 3

CORE PHOTOGRAPHIC RECORD
I-485 (Charlotte Eastern Outer Loop) at I-85



Boring DB-15 – Station 50+60 @ CL Box 3 of 3



NCDOT GEOTECHNICAL ENGINEERING UNIT

BORELOG REPORT

PROJECT NO. 34379.1.17	ID. R-2123CE	COUNTY Mecklenburg	GEOLOGIST Smith, B.
SITE DESCRIPTION I-485 (Charlotte Eastern Outer Loop) at I-85			GROUND WTR (ft)
BORING NO. DB-16	STATION 28+00	OFFSET CL	ALIGNMENT -RAMP G-
COLLAR ELEV. 648.4 ft	TOTAL DEPTH 24.2 ft	NORTHING 585,748	EASTING 1,483,817
DRILL MACHINE CME-45C	DRILL METHOD H.S. Augers	HAMMER TYPE Automatic	
DRILLER Gower, S.	START DATE 06/24/10	COMP. DATE 06/24/10	SURFACE WATER DEPTH N/A

ELEV (ft)	DRIVE ELEV (ft)	DEPTH (ft)	BLOW COUNT			BLOWS PER FOOT					SAMP. NO.	LOG MOI	LOG G	SOIL AND ROCK DESCRIPTION		
			0.5ft	0.5ft	0.5ft	0	25	50	75	100				ELEV. (ft)	DEPTH (ft)	
650														648.4	0.0	GROUND SURFACE
645	644.2	4.2	6	8	11							M				RESIDUAL Dark gray, orange-brown, brown, lt. gray, med. stiff to v. stiff, clayey silt (A-4).
640	639.2	9.2	2	3	4							W				
635	634.2	14.2	3	8	10							M				
630	629.2	19.2	30	49	51/0.2							D		628.7	19.7	WEATHERED ROCK Light to dk. gray, f. sand & silt, quartz diorite.
625	624.2	24.2								100/0.7				624.2	24.2	Boring Terminated with Standard Penetration Test Refusal at Elevation 624.2 ft on Crystalline Rock (Quartz Diorite). Boring caved in @ 17.0'.
620			60/0.0							60/0.0						
615																
610																
605																
600																
595																
590																
585																
580																
575																
570																

NCDOT BORE SINGLE R-2123CE.GPJ NC_DOT.GDT 6/30/10



NCDOT GEOTECHNICAL ENGINEERING UNIT

BORELOG REPORT

PROJECT NO. 34379.1.17	ID. R-2123CE	COUNTY Mecklenburg	GEOLOGIST Smith, B.
SITE DESCRIPTION I-485 (Charlotte Eastern Outer Loop) at I-85			GROUND WTR (ft)
BORING NO. DB-22	STATION 17+87	OFFSET 49 ft LT	ALIGNMENT -RAMP D-
COLLAR ELEV. 724.4 ft	TOTAL DEPTH 59.3 ft	NORTHING 587,483	EASTING 1,483,496
DRILL MACHINE CME-45C	DRILL METHOD H.S. Augers	HAMMER TYPE Automatic	
DRILLER Gower, S.	START DATE 06/20/10	COMP. DATE 06/20/10	SURFACE WATER DEPTH N/A

ELEV (ft)	DRIVE ELEV (ft)	DEPTH (ft)	BLOW COUNT			BLOWS PER FOOT					SAMP. NO.	MOI	LOG	SOIL AND ROCK DESCRIPTION		
			0.5ft	0.5ft	0.5ft	0	25	50	75	100				ELEV. (ft)	DEPTH (ft)	
725														724.4	0.0	GROUND SURFACE
720	720.2	4.2	7	15	16							M				RESIDUAL Brown, lt. brown, v. stiff to hard, f. sandy silt (A-4).
715	715.2	9.2	6	9	14							M				
710	710.2	14.2	9	10	10							M				
705	705.2	19.2	4	7	8							M		706.9	17.5	Light orange-brown to gray, stiff, clayey silt (A-6).
700	700.2	24.2	2	4	5							M				
695	695.2	29.2	3	4	9							M				
690	690.2	34.2	7	19	23							M				
685	685.2	39.2	22	43	39							M		686.9	37.5	Gray, hard, f. sandy silt (A-4).
680	680.2	44.2	10	21	29							M		681.9	42.5	Orange-brown & gray, hard, clayey silt (A-6).
675	675.2	49.2	10	22	51							M		676.9	47.5	Orange-brown & gray, hard, f. sandy silt (A-4).
670	670.2	54.2	35	65/0.2								D		669.7	54.7	WEATHERED ROCK Gray, f. sand & silt, quartz diorite.
665	665.2	59.2	60/0.1											665.2	59.2	CRYSTALLINE ROCK SPT refusal @ 59.3' in quartz diorite. Boring Terminated with Standard Penetration Test Refusal at Elevation 665.1 ft on Crystalline Rock (Quartz Diorite). Boring caved in @ 45.0'.
660														665.1	59.3	
655																
650																
645																

NCDOT BORE SINGLE R-2123CE.GPJ NC_DOT.GDT 6/25/10



NCDOT GEOTECHNICAL ENGINEERING UNIT BORELOG REPORT

PROJECT NO. 34379.1.17	ID. R-2123CE	COUNTY Mecklenburg	GEOLOGIST J.Howard
SITE DESCRIPTION I-485 (Charlotte Eastern Outer Loop at I-85 (MACTEC Project No. 6468-10-0119))			GROUND WTR (ft)
BORING NO. DB-23	STATION 23+00	OFFSET CL	ALIGNMENT -Y1-
COLLAR ELEV. 711.3 ft	TOTAL DEPTH 66.0 ft	NORTHING 587,972	EASTING 1,484,773
DRILL MACHINE CME 55 Track	DRILL METHOD Mud Rotary/Core	HAMMER TYPE Automatic	
START DATE 06/22/10	COMP. DATE 06/23/10	SURFACE WATER DEPTH N/A	DEPTH TO ROCK 41.0 ft

ELEV (ft)	DRIVE ELEV (ft)	DEPTH (ft)	BLOW COUNT			BLOWS PER FOOT					SAMP. NO.	L O G	SOIL AND ROCK DESCRIPTION	DEPTH (ft)	
			0.5ft	0.5ft	0.5ft	0	25	50	75	100					ELEV. (ft)
715															
710	711.3	0.0	7	4	6									711.3	0.0
	707.3	4.0												708.3	3.0
705			15	27	39										
	702.3	9.0												701.8	9.5
700			40	60/0.3											
	697.3	14.0													
695															
	692.3	19.0													
690															
	687.3	24.0													
685															
	682.3	29.0													
680															
	677.3	34.0													
675															
	672.3	39.0													
670															
	670.4	40.9													
665															
660															
655	655.3	56.0													
650															
645															
640															
635															

NCDOT BORE SINGLE R2123CE_GEO_BRDG_DBORINGS_MACTEC.GPJ NC_DOT_GDT 6/30/10



NCDOT GEOTECHNICAL ENGINEERING UNIT CORE BORING REPORT

PROJECT NO. 34379.1.17	ID. R-2123CE	COUNTY Mecklenburg	GEOLOGIST J.Howard
SITE DESCRIPTION I-485 (Charlotte Eastern Outer Loop at I-85 (MACTEC Project No. 6468-10-0119))			GROUND WTR (ft)
BORING NO. DB-23	STATION 23+00	OFFSET CL	ALIGNMENT -Y1-
COLLAR ELEV. 711.3 ft	TOTAL DEPTH 66.0 ft	NORTHING 587,972	EASTING 1,484,773
DRILL MACHINE CME 55 Track	DRILL METHOD Mud Rotary/Core	HAMMER TYPE Automatic	
START DATE 06/22/10	COMP. DATE 06/23/10	SURFACE WATER DEPTH N/A	DEPTH TO ROCK 41.0 ft
CORE SIZE NQ-3	TOTAL RUN 25.0 ft	DRILLER T.Hahn	

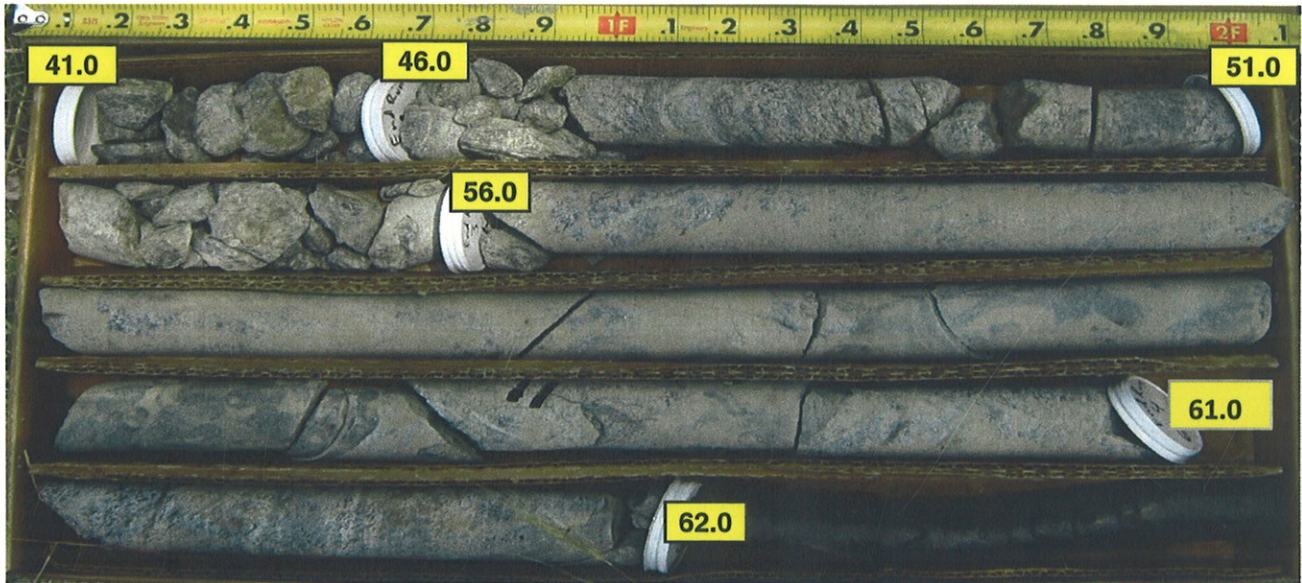
ELEV (ft)	RUN ELEV (ft)	DEPTH (ft)	RUN (ft)	DRILL RATE (Min/ft)	RUN		SAMP. NO.	STRATA		LOG	DESCRIPTION AND REMARKS	DEPTH (ft)
					REC. (ft) %	RQD (ft) %		REC. (ft) %	RQD (ft) %			
	670.3										Begin Coring @ 41.0 ft	
	670.3	41.0	5.0	3:45 3:15 3:00 3:15 3:00	(0.8) 16%	(0.0) 0%		(1.3) 14%	(0.0) 0%		CRYSTALLINE ROCK	41.0
	665.3	46.0	5.0	3:30 4:00 4:30 3:15 3:30	(1.5) 30%	(0.5) 10%					(Hard rock, followed by layers of completely weathered material)	
	660.3	51.0	5.0	3:00 3:00 3:15 4:45 3:30	(0.8) 16%	(0.0) 0%		(1.0) 100%	(0.5) 50%		Blue-gray, moderately severe to moderately weathered, moderately hard, close fracturing, Metamorphosed Quartz Diorite	50.0 51.0
	655.3	56.0	5.0	2:45 3:30 3:45 4:15 4:45	(5.0) 100%	(4.6) 92%		(0.8) 16%	(0.0) 0%		3 joints at 10 to 20 degrees	56.0
	650.3	61.0	5.0	4:15 5:00 5:00 4:45 4:30	(4.8) 96%	(4.1) 82%		(9.8) 98%	(8.7) 87%		Blue-gray, very slightly weathered to fresh, hard to very hard, moderately close fracturing, Metamorphosed Quartz Diorite	
	645.3	66.0									3 joints at 60 to 70 degrees 3 joints at 10 to 20 degrees	
	645.3										Boring Terminated at Elevation 645.3 ft in CRYSTALLINE ROCK: Metamorphosed Quartz Diorite	66.0
640												
635												
630												
625												
620												
615												
610												
605												
600												
595												

NCDOT CORE SINGLE R2123CE GEO_BRDG_DBBORINGS_MACTEC.GPJ NC_DOT.GDT 6/30/10

CORE PHOTOGRAPHS

DB-23

BOXES 1 & 2: 41.0 - 66.0 FEET



FEET



NCDOT GEOTECHNICAL ENGINEERING UNIT BORELOG REPORT

PROJECT NO. 34379.1.17	ID. R-2123CE	COUNTY Mecklenburg	GEOLOGIST S.Johnson/ J.Howard
SITE DESCRIPTION I-485 (Charlotte Eastern Outer Loop at I-85 (MACTEC Project No. 6468-10-0119))			GROUND WTR (ft)
BORING NO. DB-24	STATION 26+27	OFFSET CL	ALIGNMENT -Y1-
COLLAR ELEV. 711.4 ft	TOTAL DEPTH 73.8 ft	NORTHING 588,209	EASTING 1,484,547
DRILL MACHINE CME 55 Track	DRILL METHOD Mud Rotary/Core	HAMMER TYPE Automatic	
START DATE 06/17/10	COMP. DATE 06/22/10	SURFACE WATER DEPTH N/A	DEPTH TO ROCK 53.5 ft

ELEV (ft)	DRIVE ELEV (ft)	DEPTH (ft)	BLOW COUNT			BLOWS PER FOOT					SAMP. NO.	LOG MOI	SOIL AND ROCK DESCRIPTION	DEPTH (ft)	
			0.5ft	0.5ft	0.5ft	0	25	50	75	100					
715															
710	711.4	0.0	5	5	11									GROUND SURFACE	0.0
	708.0	3.4	30	52	48/0.2									RESIDUAL Brown and gray, fine sandy CLAY (A-6)	
705	703.0	8.4	45	55/0.5										WEATHERED ROCK (Gray and orange, Metamorphosed Quartz Diorite)	4.4
700	698.0	13.4	100/0.5												
695	693.0	18.4	30	66	34/0.1										
690	688.0	23.4	12	14	16									RESIDUAL Brown, tan and orange, fine to coarse sandy SILT (A-4)	22.0
685	683.0	28.4	22	21	41										
680	678.0	33.4	6	12	12									Tan, orange, clayey SILT (A-4), with trace fine to coarse sand	32.0
675	673.0	38.4	40	44	54										
670	668.0	43.4	22	78/0.3										41.3 to 42.4 ft: Hard layer	
665	663.0	48.4	14	21	79/0.2									WEATHERED ROCK (Brown and Orange Metamorphosed Quartz Diorite)	43.9
660	658.0	53.4	60/0.1											CRYSTALLINE ROCK (Hard Gray Metamorphosed Quartz Diorite)	53.5
655	654.5	56.9	60/0.0											Blue-gray, moderate to slight weathering, hard, close fracturing, Metamorphosed Quartz Diorite	56.9
650														Two joints at 20-30 degrees Two joints at 60-70 degrees with healed joints	63.3
645														Blue-gray with green veins, slight weathering to fresh, hard to very hard, moderately close to wide fracturing, Metamorphosed Quartz Diorite	
640														Two joints at 60 - 70 degrees with healed joints	
635														Boring Terminated at Elevation 637.6 ft in CRYSTALLINE ROCK: Metamorphosed	73.8

NCDOT BORE SINGLE R2123CE_GEO_BRDG_DBORINGS_MACTEC.GPJ NC_DOT_GDY 7/2/10



NCDOT GEOTECHNICAL ENGINEERING UNIT

BORELOG REPORT

PROJECT NO. 34379.1.17	ID. R-2123CE	COUNTY Mecklenburg	GEOLOGIST S.Johnson/ J.Howard
SITE DESCRIPTION I-485 (Charlotte Eastern Outer Loop at I-85 (MACTEC Project No. 6468-10-0119))			GROUND WTR (ft)
BORING NO. DB-24	STATION 26+27	OFFSET CL	ALIGNMENT -Y1-
COLLAR ELEV. 711.4 ft	TOTAL DEPTH 73.8 ft	NORTHING 588,209	EASTING 1,484,547
DRILL MACHINE CME 55 Track	DRILL METHOD Mud Rotary/Core	HAMMER TYPE Automatic	
START DATE 06/17/10	COMP. DATE 06/22/10	SURFACE WATER DEPTH N/A	DEPTH TO ROCK 53.5 ft

ELEV (ft)	DRIVE ELEV (ft)	DEPTH (ft)	BLOW COUNT			BLOWS PER FOOT					SAMP. NO.	MOI	LOG	SOIL AND ROCK DESCRIPTION		
			0.5ft	0.5ft	0.5ft	0	25	50	75	100				ELEV. (ft)	DEPTH (ft)	
635															Match Line	
630															Quartz Diorite	
625																
620																
615																
610																
605																
600																
595																
590																
585																
580																
575																
570																
565																
560																
555																

NCDOT BORE SINGLE R2123CE_GEO_BRDG_DBORINGS_MACTEC.GPJ NC_DOT.GDT 7/2/10



NCDOT GEOTECHNICAL ENGINEERING UNIT CORE BORING REPORT

PROJECT NO. 34379.1.17		ID. R-2123CE		COUNTY Mecklenburg		GEOLOGIST S.Johnson/ J.Howard					
SITE DESCRIPTION I-485 (Charlotte Eastern Outer Loop at I-85 (MACTEC Project No. 6468-10-0119))							GROUND WTR (ft)				
BORING NO. DB-24		STATION 26+27		OFFSET CL		ALIGNMENT -Y1-	0 HR. N/A				
COLLAR ELEV. 711.4 ft		TOTAL DEPTH 73.8 ft		NORTHING 588,209		EASTING 1,484,547	24 HR. FIAD				
DRILL MACHINE CME 55 Track		DRILL METHOD Mud Rotary/Core				HAMMER TYPE Automatic					
START DATE 06/17/10		COMP. DATE 06/22/10		SURFACE WATER DEPTH N/A		DEPTH TO ROCK 53.5 ft					
CORE SIZE NQ-3		TOTAL RUN 16.9 ft		DRILLER T. Hahn							
ELEV (ft)	RUN ELEV (ft)	DEPTH (ft)	RUN (ft)	DRILL RATE (Min/ft)	RUN		STRATA		L O G	DESCRIPTION AND REMARKS	DEPTH (ft)
					REC. (ft) %	RQD (ft) %	REC. (ft) %	RQD (ft) %			
	654.5									Begin Coring @ 56.9 ft	
	654.5	56.9	1.9	3:45	(1.7)	(0.8)	(4.5)	(2.0)		654.5	56.9
	652.6	58.8		3:30/0.9	89%	42%	70%	31%		CRYSTALLINE ROCK	
650			5.0	3:45	(3.3)	(1.7)				Blue-gray, moderate to slight weathering, hard, close fracturing, Metamorphosed Quartz Diorite	
				3:30	66%	34%				Two joints at 20-30 degrees	
	647.6	63.8		4:00						Two joints at 60-70 degrees with healed joints	63.3
			5.0	5:00						Blue-gray with green veins, slight weathering to fresh, hard to very hard, moderately close to wide fracturing, Metamorphosed Quartz Diorite	
645				4:30	(5.0)	(5.0)	(10.3)	(10.3)			
				3:45	100%	100%	98%	98%		Two joints at 60 - 70 degrees with healed joints	
	642.6	68.8		3:30							
640			5.0	3:45	(4.8)	(4.8)					
				4:00	96%	96%					
				3:30							
	637.6	73.8		3:45						637.6	
635				3:45						Boring Terminated at Elevation 637.6 ft in CRYSTALLINE ROCK: Metamorphosed Quartz Diorite	73.8
630											
625											
620											
615											
610											
605											
600											
595											
590											
585											
580											
575											

NCDOT CORE SINGLE R2123CE_GEO_BRDG_DBBORINGS_MACTEC.GPJ NC_DOT_GDT_7/2/10

CORE PHOTOGRAPHS

DB-24

BOXES 1 & 2: 56.9 - 73.8 FEET



FEET